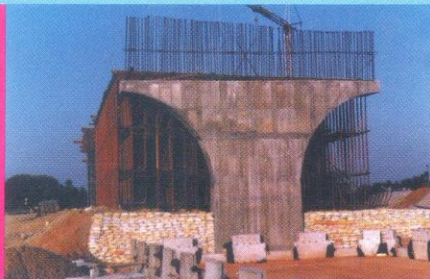
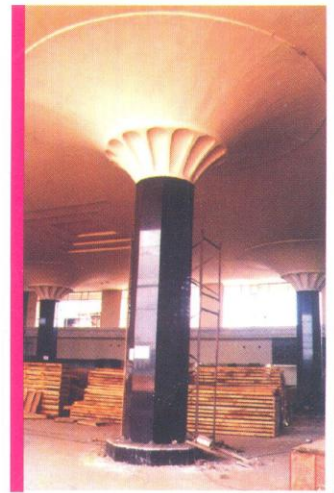
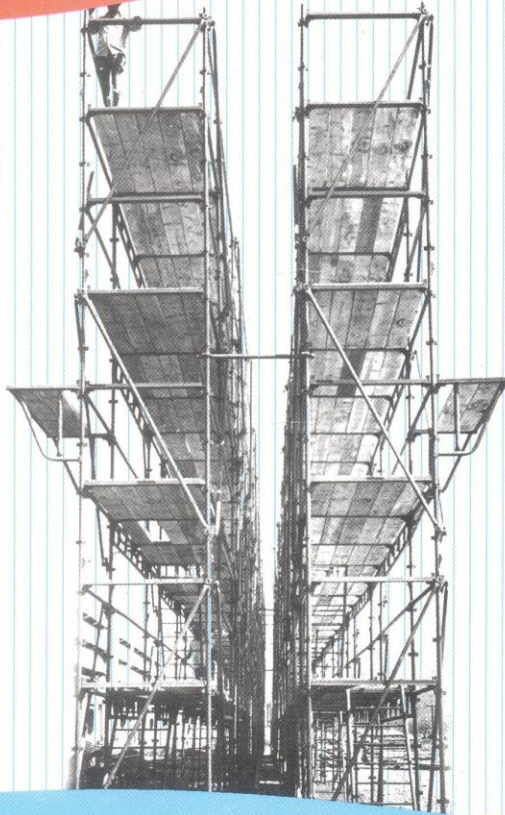
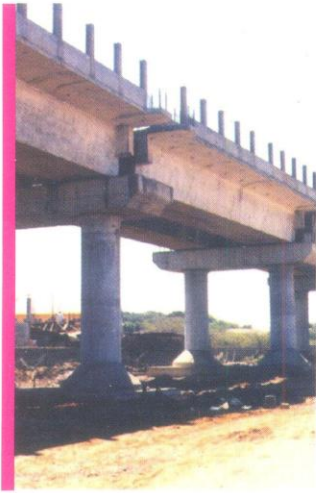


CUT CONSTRUCTION COSTS AND TIME SAFEST WAY

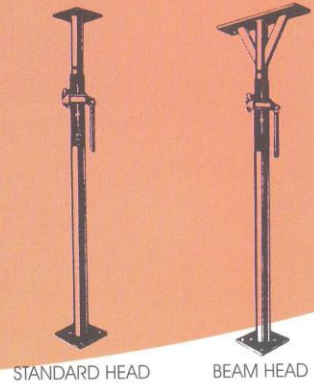
buildscaff
ENGINEERS

STEEL CENTERING, SHUTTERING AND SCAFFOLDING EQUIPMENT



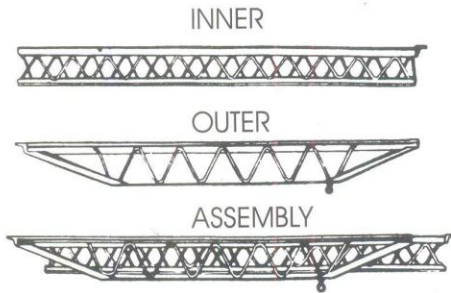
'Adjustable Telescopic Steel Prop. Manufactured out of 48.3 mm and 60.3 mm Heavy or Medium ERW tubes with Malleable cast Iron Nut

S.No.	Size	Minimum	Maximum	Safe Axial Load	
				Closed (Kg)	Extended
1.	0	1.00 Mtr. (3')	1.75 Mtr. (5' 9")	3500	3000
2.	1	1.50 Mtr. (4' 11")	3.25 Mtr. (10' 8")	3100	2200
3.	2	2.00 Mtr. (6' 6")	3.75 Mtr. (12' 3")	3000	2200
4.	3	3.00 Mtr. (9' 10")	4.65 Mtr. (15' 3")	2400	1200
5.	4	3.00 Mtr. (9' 10")	5.65 Mtr. (18' 6")	2400	1000



• Limitless Life • Reliable Strength and Safety • Infinite Adjustment • Erected in Seconds
 Note: Props must be suitably braced with Pipes and couplers when extended Beyond 3.6m (12ft)

Light Weight Spans manufactured out of 14 SWG tested quality H.R. Sheet, 40 x 40 x 5 mm 'T' angle, 6 mm thick M.S. Flat, 10 M.S. Rounds, 75 x 75 x 8 Angle etc.,



S.No.	Size	Closed (Size)	Extended
1.	ESO / ESI	1.83 Mtr. (6')	2.70 Mtr. (8' 10")
2.	SO / ESI	2.39 Mtr. (7' 10")	3.45 Mtr. (11' 4")
3.	SO / SI	2.50 Mtr. (8')	4.15 Mtr. (13' 8")
4.	SO / L1	3.20 Mtr. (10' 6")	5.00 Mtr. (16' 4")
5.	LO / SI	3.05 Mtr. (10')	4.85 Mtr. (15' 10")
6.	LO / L1	3.20 Mtr. (10' 6")	5.50 Mtr. (18')

Floor Form and Adjusters Manufactured out of 14/12 G. Tested Quality H.R. Sheets

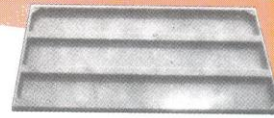
**STANDARD
FLOOR FORMS SIZES**

1150 X 600
900 X 600

**FLOOR FORM
ADJUSTER SIZES**

1150 X 450
900 X 450

FLOOR FORMS



Double Stiffeners

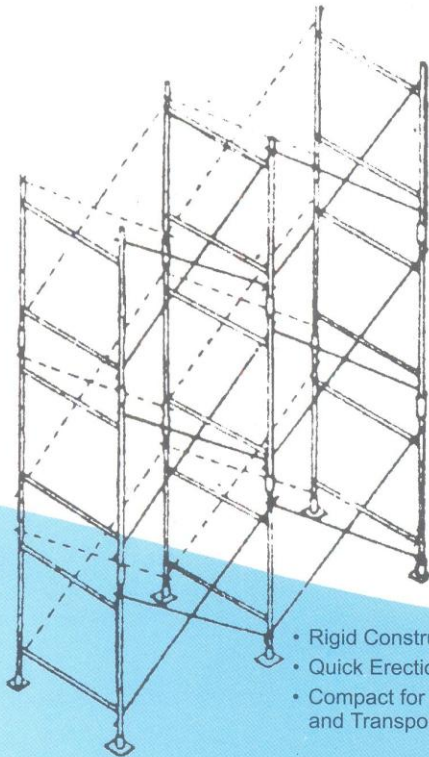


Adjuster

TAILOR MADE SIZES CAN ALSO BE SUPPLIED

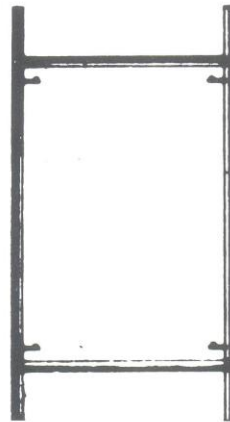
'H' FRAME SCAFFOLDING

Consists of Socket Welded Frames Made out of 48.3 mm Heavy or Medium ERW Tubes with Two Verticals and Two Horizontals The Frames are Inter Connected By Scissors Cross Braces

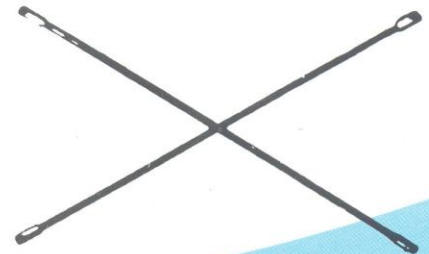


- Rigid Construction
- Quick Erection
- Compact for stacking and Transport

'H' Frames manufactured out of 40 mm 'A' / 'B' Class Pipes and cross Brazings are 20/25 mm 'A' / 'B' class pipes, etc.

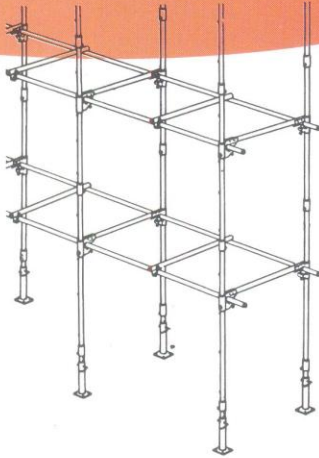
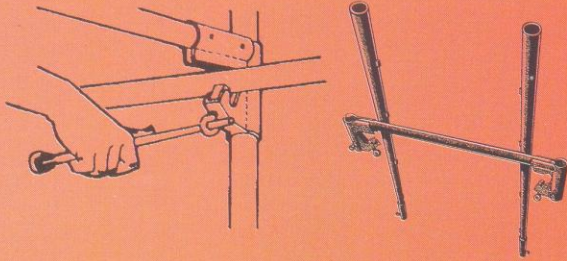


'H' Frame
Size: 2 Mtr. x 1.22 Mtr.



Cross Brazing
for H Frame Spacing
1.5 M, 2M, 2.5M

GENERAL PURPOSE SCAFFOLDING UNIT



- Prefabricated to optimum degree
- No loose fittings
- Adjustable cross-bar gives maximum choice of working heights
- Absence of cross bracing in units provide unobstructed passage for men and materials.
- Great compactness for transport and storage
- The lugs on the verticals provide positive support for cross-bars
- Universal application
- Unsurpassed safety to work through the use of high grade material and unique design.

SOCKET JOINTS

Direct contact bearing of each frame on frame below ensures perfect transmission of load and also perfect alignment of entire scaffold.

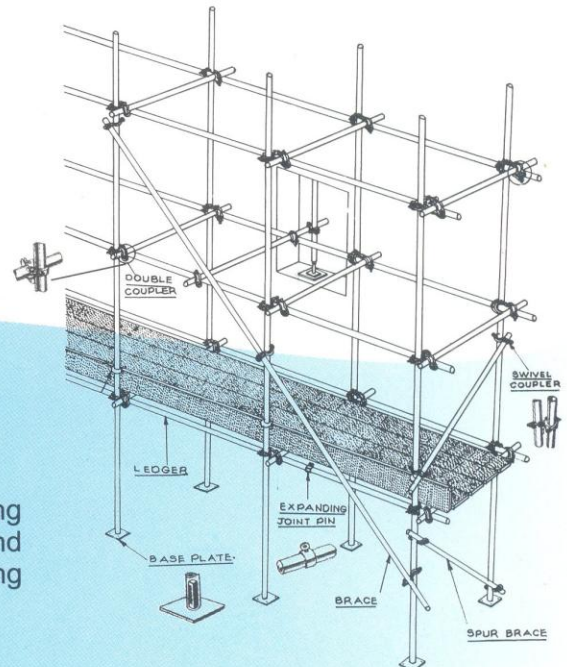
C Clamp for threefold security at ledger coupler is achieved by

1. Clamping screw
2. Locking screw
3. registering lug

Note: If crossbar needs to be located at any position between registering lugs there is still a double security in (1) and (2)

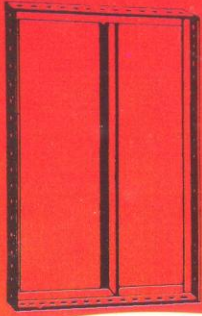
This is the ideal scaffolding which does not need even a spanner for its erection and dismantling since all the locking screws are provided with eye holes and can be tightened with an ordinary M.S. rod. These units are manufactured in 2 mtr heights and 1.25 mtr width.

Special sizes can also be supplied.

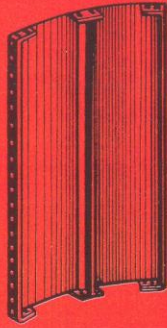


TUBE AND FITTING SCAFFOLDING

This system consists of individual tubes and scaffolding fittings. Double couplers connect tubes at right angle and Swivel couplers connect tubes at any angle. This scaffolding needs a simple spanner for erection and dismantling.



STANDARD WALL FORM
Size: 500 mm x 1250 mm



FLEXIBLE WALL FORM
Size: 500 mm x 1250 mm



90° INTERNAL
CORNER PANEL



135°
INTERNAL
SPRAYED
CORNER
PANELS



90° EXTERNAL
CORNER ANGLES

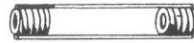


CHANNEL SOLDIERS
Size: 100 mm x 2500 mm



HEAVY DUTY CHANNEL SOLDIERS
Size: 100 mm x 3000 mm

Coil Tie



Loop Tie



Tie Bolt



Coil Tie assembly



Single Loop Tie
assembly



Washer



Cone



Single clip for connecting
walings to soldiers
and walforms



Expanding Joint Pin.



Swivel Coupler
Size: 40 x 40

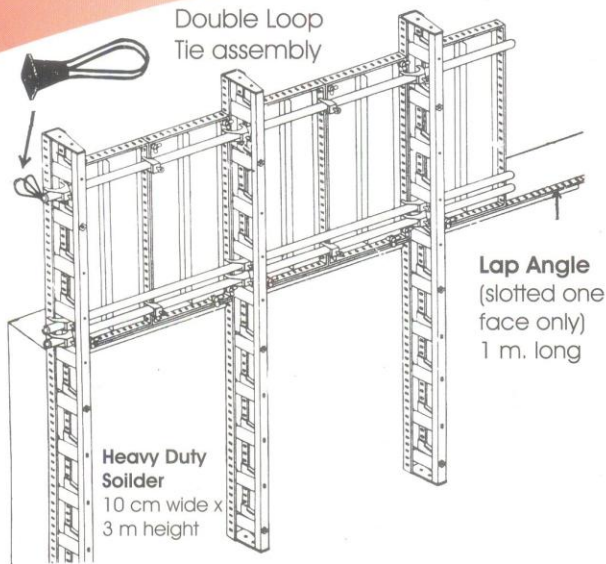


Double Coupler for right angle joint
Size: 40 x 40 mm

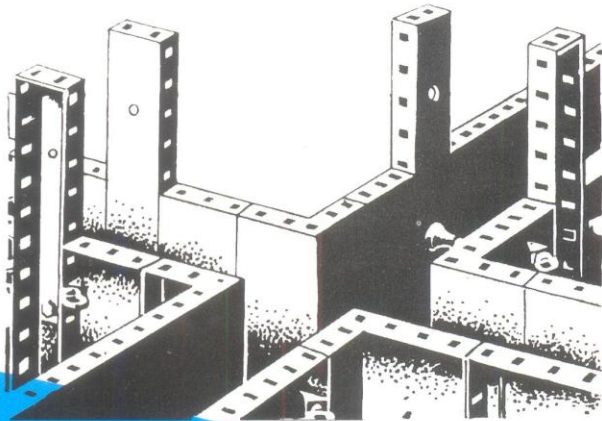
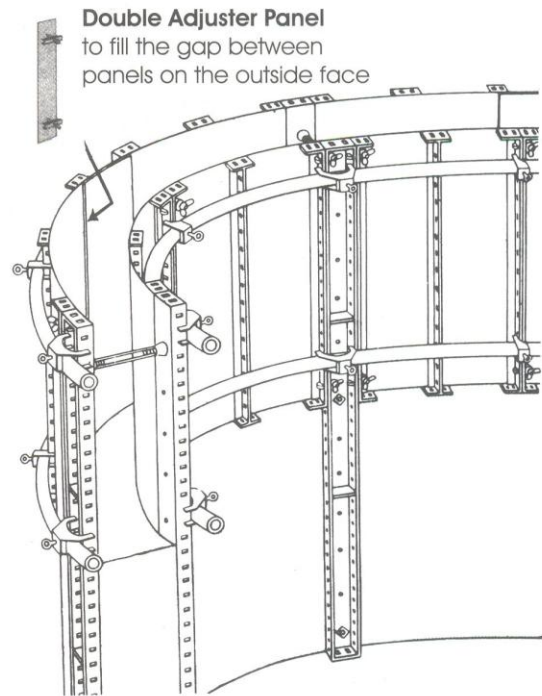
Adjustable Stirrup head

WALLFORM SHUTTERING SYSTEMS

Typical set up of single sided walformwork of climbing type



Typical set up of double sided walformwork of climbing type for curved structures.



Wallform System

We also manufacture Tailor made Shuttering and Centering materials to suit your site condition.

BUILDSCAFF ENGINEERS

DP-112 (SP), IInd MAIN ROAD, (BEHIND CHINNAMMAL WEIGH BRIDGE), INDUSTRIAL ESTATE, AMBATTUR, CHENNAI - 600 058.

Phone : 044 - 42180196, 26357299 Fax : 044 - 26357299

Cell : 9841025802, 9840062535, 9840062537 E-mail : buildscaff@yahoo.com